



**IFMA™**  
International Facility Management Association

**KANSAS CITY CHAPTER**

# Monday Morning Memo

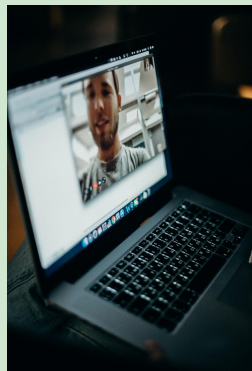


THE NEWEST WAY TO STAY UP TO DATE  
WITH ifmaKC & FACILITY RESOURCES AMIDST OUR NEW REALITY

## Important Info on UPCOMING EVENTS

Due to the "Shelter In Place" mandate of KCMO, please be aware all in-person ifmaKC events have been cancelled.

Thursday, April 30  
**Must Register To Attend**  
Coming Back to Work Safely:  
ifmaKC Education Roundtable  
[Online Webinar](#)  
[REGISTER HERE](#)



PLEASE NOTE: Our CFM Prep Class has been **postponed** due to



## ifmaKC COVID-19 Resources

As we continue to see the landscape shift, ifmaKC remains dedicated to serving our members.

When it comes to the COVID conversation, we want to help you and your company by providing as much information as possible. Rather than a "firehose" approach of just throwing every single article and study at you, we are building partnerships and creating specialized content.

Starting with our Virtual Program Meeting last Tuesday, Janet Lockrdige shared her expertise on building operations. If you were unable to attend, we have provided a recording of that presentation on our YouTube channel. You can view it [here](#)

We have worked quickly to provide you with extra

**COVID-19. Please be aware this will be rescheduled for a later date.**



**Masks for Health Care Workers**



Every \$10 Donation provides 25 Masks!

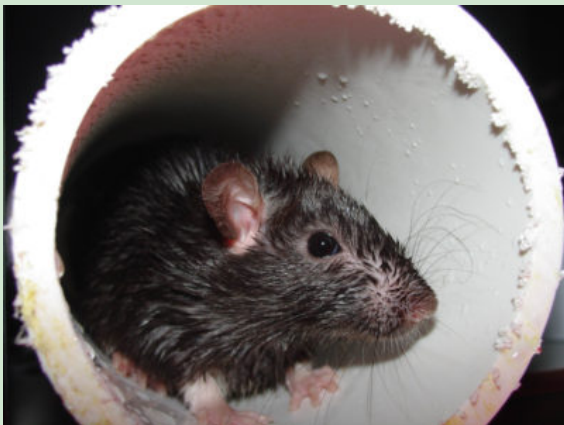
**Help Us Reach our Goal of 1000 Masks  
Donate to Our Mask Fund!**

**For just \$10 you can send 25 masks to the front lines of hospitals right here in Kansas City!**

**[Donate Directly Here](#)**

**Rodents on the Rise: How COVID-19 Brings Additional Risk**

**[Read Article Here](#)**



links to not only IFMA HQ information, but awesome content from our associate members, fellow FMs or one of the many publications and outlets that serve the profession. Simply visit our homepage and click on **[COVID-19 Resources](#)** on the main menu. This page will be updated regularly, especially as new information becomes available.

Another opportunity to get great information is our educational roundtable program on Thursday, April 30th. We have assembled an amazing team of professionals to start the "Back-to-Work" discussion and what that could possibly mean for you, your buildings, and your employees. This program is free to members, and only \$10 for guests, so be sure to share it with anyone you know how could benefit from the discussion. Our panel consists of:

**Jim Wilkinson - Image Flooring**  
**Dr. Steven Whitfield – Retired Cardiologist**  
**Jonathan Smith - Siemens**  
**Bob Rodriguez - ACS**  
**Teresa Reicheter – Garmin**  
**Jason Kisor - Q4 Industries**

These professionals will be discussing cleaning challenges, building operations, hvac, taking care of your employees and other topics pertaining to the opening of buildings after the "shelter-in-place" order has been lifted. This will be the first in what we hope is a series of roundtables on the new world with COVID-19.

**[REGISTER NOW](#)**

In the coming months, we look forward to providing you as much information as we can! Thank you for being a member and allowing us to serve you.



**First Food Donation from ifmaKC Provided to Nurses and FM Staff at St. Joseph Medical Center**

## Quick Watch: How Communities Management and Facilities Management companies are combating COVID- 19



As we continue to hold our programs virtually, we will be donating those budgetary funds to send meals to our healthcare heroes and hardworking Facility Managers of area hospitals. Our very first location was St. Joseph Medical Center in Kansas City, with delicious pizza from our own local Buffalo State Pizza. We are committed to helping our local economy and restaurants as we deliver meals and smiles. Thank you for being our partner in this endeavor! Check out [Buffalo State Pizza](#) and their delicious menu for your next takeout night!



**We are here to serve YOU!**  
Please don't hesitate to send us your ideas,  
feedback or gripes!

Email our executive administrator,  
Rose Parmeter-Aubut: [info@ifmakc.org](mailto:info@ifmakc.org)

[Click here to login into our website as a member!](#)

Check out other members, learn about our committees and see our calendar of upcoming events!

