



IFMA[®] **Kansas City
Chapter**

International Facility Management Association

≡ Welcome ≡

Now what??

ifmaKC is like most good things in life...**the more you put into it, the better it gets!!**

Let us help you
get the MOST out of
your **Membership!**



Dear New Member,

Welcome to ifmaKC.

Our Chapter is a diverse group of professionals that meet to network and share best practices.

- Facility management professionals share ideas and proven solutions to facility problems.
- Associate members provide services and products that address facility needs.

Monthly chapter meetings are designed to be both enjoyable and educational. The topics range from core competencies for Certified Facility Managers to tours of the coolest buildings in the Kansas City Area.

We have seen tremendous growth over the years and more Facilities Professionals are becoming part of this great chapter. This is important because the chapter was established to be a support system and resource for them.

It is important that we recognize our Associate Members and the key role they play in our chapter. They provide many of the needed products and services to help us as professionals succeed in our different industries. They also provide many different aspects to our industries that Facilities Professionals may not recognize. Together, Facilities Professionals and Associate Members make our chapter vibrant.

We encourage you to volunteer and become part of a committee. Be involved! Be a Sponsor! You will grow as a professional or associate member through your involvement in the ifmaKC.

Sincerely,

Your ifmaKC Board!

Kansas City IFMA
1801 McGee Street, Suite 100
Kansas City, MO 64108

ifmaKC Code of Ethics

The Kansas City Chapter of IFMA Board of Directors and Membership Committee believes that networking provides significant business value to not only our Professional Members, but Associate Members as well. It is our chapter's goal to create inviting, fun and informational events to bring associate and professional members together for mutual gain.

The following code of ethics should be followed when attending IFMA sponsored events so that ***You and the Chapter*** will benefit greatly:

- **Conduct themselves and their activities in a professional business manner**
- Abide by the bylaws and policies of IFMA
- Keep confidential anything of a sensitive and/or proprietary nature mentioned in IFMA meetings, at IFMA activities or written in the IFMA minutes or other IFMA documents or IFMA communications
- **Properly register at all IFMA meetings and activities**
- **Refrain from engaging in sales activities or solicitation at any scheduled meetings or activities. Members who fail to observe this policy will be subject to loss of membership**
- Refrain from conducting any other activity contrary to the purposes and objectives of IFMA
- Refrain from distributing any materials or post displays of any kind at IFMA activities without the prior approval of the IFMA Board of Directors or their designated representative
- Refrain from using the IFMA name other than in the conduct of IFMA business, as determined by the Board of Directors
- **Refrain from the use of the IFMA general membership list, mailing list, or any subsets thereof, except for IFMA business. Membership lists are not to be furnished to non-members without the written permission of the IFMA Board of Directors. Members who fail to observe this policy will be subject to loss of membership.**
- Restrict the use of IFMA proprietary documents to the use(s) defined by the policies and procedures of the IFMA Board of Directors.
- Refrain from publicly disclosing verbal or written information pertaining to IFMA business without prior written approval of the Board of Directors.

Please read and understand the IFMA Code of Ethics. Understand that willful violation of the IFMA Code of Ethics may result in revocation of my membership, as determined by the ifmaKC Board of Directors

**Now is the time to
elevate your career.
Your community is waiting.**

Build relationships, learn best practices and grow your career with IFMA's global community.



The Benefits of IFMA HQ

Access the Value of IFMA

IFMA enables, empowers and equips FMs to solve challenges today and in the future. IFMA can help you advance through professional development, networking and leadership skills — and the world's best FM events!

Resources to Help You Succeed

Propel your career forward, find better solutions faster, keep pace with the changing industry and bring additional value to your organization.

Training & Credentials for the Career You Want

Develop the skills you need for career advancement with training and credentials for facility professionals from all backgrounds and experience levels.

Networking You Need to Advance

Make connections and build the relationships you need for a successful career in FM.

Opportunities to Make an Impact

Make a lasting impact on IFMA and the FM profession by taking advantage of IFMA's leadership opportunities.

Advance Your Career with IFMA

From career resources to networking opportunities, IFMA has the power to accelerate your career. Build your network, learn best practices and grow your career and knowledge with an IFMA membership.

Discover IFMA Membership

IFMA offers opportunities for every stage of your career, so that you can perform at the highest level.

IFMA Councils & Communities

Industry Specific Councils

- Academic Facilities
- Airport Facilities
- Banking Institutions & Credit Unions
- Corporate Facilities
- City & Country Clubs
- Hospitality Council
- FM Consultants
- Health Care Council
- Legal Industry
- Manufacturing, Industrial & Logistics
- Museums / Cultural Institutions
- Public Sector Facilities Council
- Utilities Council
- Nonprofit Facilities Council
- Research & Development
- Retail Facilities Council

Industry Specific Communities

BIZ **Business Community** - Leadership, Finance, Quality, and Communications

ESUS **Environmental Stewardship, Utilities & Sustainability**

OMHS **Operations & Maintenance, Health & Safety**

IT **Information Technology Community**

REAL **Real Estate Advisory & Leadership Community**

WE **Workplace Evolutionary (WE)**

MIL **Military Community** - Bridges the gap between the facility management profession and active-duty military & veterans with facility management adjacent skills

Membership Types & Annual Dues

IFMA MEMBERSHIP TYPES: WHICH ONE FITS YOU BEST?

START HERE

Do you offer a **product** or **service solution** to Facility Professionals?



Y



\$695

ASSOCIATE

N



Are you currently employed as a **full time student** at an accredited college?

N

Y



\$0

FM STUDENT

+/- 35?

You're a practicing Facility Management Professional. Are you **35 years old or younger**?

N

Y



\$299

YOUNG PROFESSIONAL



\$439

FM PROFESSIONAL

Still not sure what type is right for you? IFMA can help. Please contact us at info@ifmaKC.org.

ifmaKC Professional Group Membership

Did you know that ifmaKC offers a Bulk Discount for Professionals?

Just like Costco! Except instead of a gallon of Mayo for \$2.00, your company get hundreds of dollars in rebates towards continuing education for any of your colleagues that also join! That's for Professionals FMs, Property Managers, Maintenance Managers, Techs & Crew, etc.!

It's a fantastic opportunity to invest in the professional growth of your team while also saving money. By taking advantage of this Professional Group Membership, your organization can enhance the skills and knowledge of its members, ensuring they stay at the forefront of industry developments.

Additionally, these educational advancements can lead to increased efficiency and innovation within your company. So why not make the most of this offer and support your colleagues' continuous learning journeys? Embrace the chance to grow together and achieve new heights of success!

We dig those studious, over-achiever types!




Hallmark

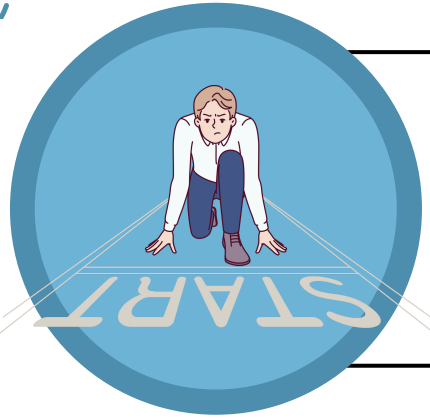
Gilbane

Facilities Management Services
Transition Planning & Management



ifmaKC for Beginners

Know your goals!



The top 3 reasons people join **ifmaKC** are to gain access to **peer knowledge**, to belong to their **local FM community**, and for **career advancement**. **ifmaKC** provides their members opportunities to **Connect | Learn | Advance**.

You've invested the \$\$, now invest the time!

Show up!!

ifmaKC offers educational, networking & professional development events to their Members every single month! Everything from **online learning courses to casual coffees**, from **happy hours to luncheons**, from **facility tours to tournaments**.

Come to one, or come to them all! **We'd love to see you!**



Get Involved!!

You can't **build a network**, until you **start networking!**

ifmaKC has tons of **committees that you can join!** Meet new people, brainstorm ideas, work within your community, throw a party! You name it, we've probably got a committee for it!



Get Certified!

IFMA offers the **3 most respected & globally recognized** credentials available in the Professional Facility Manager industry. And your local **ifmaKC** chapter offers the classes & training to help you get those certifications.

Our **FMP, SFP, & CFM Credentials** can help you **distinguish yourself, prepare you for advancement & enhance your career!**





ifmaKC has volunteer options to match your availability!

Are you ready to bring the heat?



I've only got a couple hours, but they're all for you!

Or maybe your desire to help is only exceeded by your "to do" list?



You get to choose your level of involvement!

So, whether you're interested in volunteering for a demanding committee but only have time for limited responsibility or you're prepared to jump in anywhere and tackle any task...

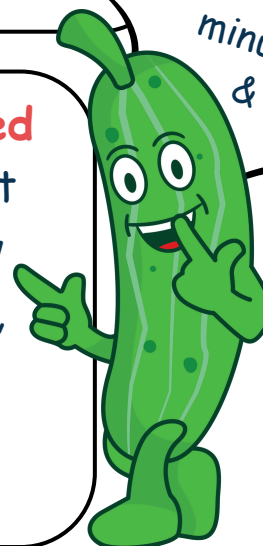


I've got a few minutes here & there

Free Time? What's That?



We are **extremely excited** for you to join us and get involved. No matter how packed your schedule is, there is always a spot waiting just for you on **our team!**



Some Committees are chill like a cucumber, others are spicy like a jalapeño - but ALL can be taken in small bites.





Want to get involved?

ifmaKC has several Committees in need of **Volunteers!**

And we are definitely looking at **YOU Professionals!!**

Heat levels vary. We have options!! Choose low (green), hot (yellow) or blazin' (red).



Always wanted to be that person **handing out awards?** Love to help people exceed their goals?

Our **Scholarship Committee** is where you belong!

Scholarship@ifmaKC.org



Do you live for **organization?** Love to **make a plan** and **see it come together?**

Then our **Logistics Committee** is what you're looking for!

Logistics@ifmaKC.org



Do you love **education?** Do you **thrive in a collaborative** group?

Then our **Professional Development Committee** is what you're looking for!

ProfessionalDevelopment@ifmaKC.org



Are you a **marketing & social media guru?** Do you want to **connect your message** to the largest possible audience?

Then our **Communications Committee** wants **YOU!**

Communications@ifmaKC.org



Are you **passionate & focused on goals** and ideals? Do you love **fundraising for worthy causes?**

Then join our **Sponsorship Committee!**

Sponsorship@ifmaKC.org





Are you interested in bringing **bright young minds into the industry**? Would you love the opportunity to help **students ensure a thriving future**?

Then our **Students Committee** is what you're looking for!

Students@ifmaKC.org



Consider yourself a **master strategist? A puzzle master? A big picture savant?**

Then find your tribe with our **Strategic Planning Committee!**

StrategicPlanning@ifmaKC.org



Are you a **talker, a connector, never met a stranger?**

Then the **Membership Committee** could definitely use your help!

Membership@ifmaKC.org



Do you have a knack for **aligning the right people with the right roles**? Do you enjoy **representing the interests of your community**?

Join our **Nominations Committee!**

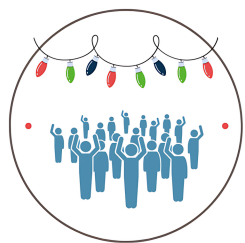
Nominations@ifmaKC.org



Want to help **raise thousands of dollars** for **scholarships** and furthering education? Do you love the great outdoors?

Then help our **Golf Committee** throw our biggest fundraiser of the year!

Golf@ifmaKC.org



Do you throw the **best parties**? Do you want to get involved, but don't have a lot of time to commit?

Then join our **Holiday Committee** and help put on our Annual Holiday Party! *(and hopefully raise a little \$ for a local KC charity)*

Holiday@ifmaKC.org





Always wanted to **be a mentor**? Excited to give a guiding hand and **make some aspirational introductions**?



Our **Emerging Professionals Committee** is what you want!

EP@ifmaKC.org



Are you a **planner**? A **budgeter**? Are **P&L's** your **happy place**?



Then we've got a **Finance Committee** with your name on it!

Finance@ifmaKC.org



Ever wanted to **be involved in more**? **Give back more**? Wanted to **build something GREAT**?



Then our **Community Outreach Committee** is waiting for you.

CommunityOutreach@ifmaKC.org



Interested in helping **ifmaKC** collaborate with **BOMA**, **ASHRAE** and **USGBC**? Would you like to be one of ifmaKC's liaisons to the **BEP**?



What is that you ask? www.bepKC.org.

BEP@ifmaKC.org

Joining one of our committees is a great way to make a real difference in the FM community, while also boosting your career. You get to share your skills and ideas, help to shape projects and make things better. Plus, it's a fantastic way to meet new people and expand your network. You'll connect with others who share your interests, make friends, and maybe even find new career opportunities. So, jump in, get involved, and enjoy the experience ~ **it's a win-win for everyone!**

Monthly Chapter Meetings & Fees

Our monthly program meetings are where Professional Facility Managers and Associate Members network, get educated and eat good food. Each meeting hosts a topic of interest to all members.



<u>Professional & Associate Member</u>	=	<u>\$0</u>
<u>Student Member</u>	=	<u>\$0</u>
<u>Guest/Non-Member</u>	=	<u>\$40</u>



NOTE: We occasionally offer social and networking events in addition to our regular monthly meeting Programs, Tours & Luncheons. These will have fees attached to either help with the cost of the event itself, or to help raise money for our Chapter!

Want to check out our Upcoming Calendar of Events??

(You really should, it's pretty great!)



Scan the code or go to:
<https://ifmakc.org/meetinginfo.php>

SCAN
ME! >>



ifmaKC Annual Holiday Party



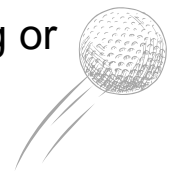
Make sure and join us for our Annual Holiday Party!
This isn't just a fun & festive social event, there's also many opportunities to raise funds and donations to help with a local KC charity.



ifmaKC Annual Golf Tournament

The ifmaKC Annual Golf Tournament is held each year to raise funds for Scholarships & Grants to support our chapter members and area students who are pursuing or continuing education in the FM field.

(and it's a lot of fun too!!)



ifmaKC Scholarships

Did you know that ifmaKC has over \$20,000 to give in scholarships and grants to ifmaKC members and area students each year?



ifmaKC offers 3 different types of Scholarship / Grant Opportunities:

1) World Workplace:

ifmaKC HIGHLY recommends members attend IFMA World Workplace Conference. Annually ifmaKC awards monies to ifmaKC members to attend <https://worldworkplace.ifma.org>.

2) Facility Fusion:

ifmaKC also HIGHLY recommends members attend IFMA Facility Fusion Conference. Annually ifmaKC awards monies to ifmaKC members to attend <https://facilityfusion.ifma.org>

3) Credentials Scholarship or Grant:

To promote IFMA certifications (CFM, FMP, SFP, Essentials of FM) ifmaKC members may apply for training courses and certification course scholarships. Application deadline for this scholarship or grant is on an as needed bases.



To learn more, scan the code go to:
https://ifmakc.org/Scholarships___Grants

SCAN ME! >>>



THE BENEFITS OF IFMA CREDENTIALS

What's in it for *you*?



Facility Management Professional (FMP)

Gain the skills you need. This is a great course for business professionals and others new to the facility management industry.

What You'll Learn:

- Best practices for managing your facilities
- Effective strategies and critical thinking skills
- The four pillar areas of study for a strong foundation



Sustainability Facility Professional (SFP)

Develop your expertise in sustainable facility management practices. Great for new and experienced FMs.

What You'll Learn:

- Sustainability best practices, solutions, and strategies
- How to incorporate sustainable practices into your facility
- How to optimize resources to impact the triple bottom line



Certified Facility Manager (CFM)

Assess your knowledge and understanding across all 11 FM core competencies and get the certification that sets the industry standard of competence of practicing facility managers.

What You'll Gain:

- Mastery of a global standard of knowledge
- Credibility through validating your expertise
- The pinnacle achievement of FM professionals





THE BENEFITS OF IFMA CREDENTIALS

What's in it for *you*?

IFMA Credentials offer proven, unrivaled results for your career!




An online survey developed to evaluate the value of IFMA credentials was distributed by IFMA to approximately 7,500 IFMA credential holders worldwide to ask:



How have your IFMA credentials impacted your career?

- ▶ **16:1 Return of Investment**
The average five-year return on investment of IFMA credentials is 16:1 for credential holders
- ▶ **\$5,400+ Avg. Salary Increase**
On average, 40% of those who earned IFMA credentials received a promotion and an \$5,400 annual salary increase within the first year.
- ▶ **#1057 ANSI-Accredited****
Respected throughout the industry, ANSI accreditation is nationally and internationally recognized as a mark of quality.
- ▶ **63% of Employers** provided financial support for their employees to achieve their credentials (either partial or full support),
- ▶ **78% of Respondents** hold that their immediate supervisors find value with their credentials
- ▶ **86% of Respondents** believe IFMA credentials have a good-to-excellent reputation among facility management professionals
- ▶ **52% of Respondents** reported a salary increase due to their credential.



			
Average Annual Salary After Earning Credential	\$92,383	\$113,059	\$112,595
Received A Promotion After Earning Credential	42%	26%	53%
Received A Raise After Earning Credential	5%-\$4,180	2%-\$2,568	6%-\$6,759

ifmaKC Service Directory

We are absolutely **thrilled** to be launching the all-new **ifmaKC Service Directory** soon! Designed exclusively for our members, this comprehensive resource is your go-to guide for accessing a wide range of services provided by fellow **ifmaKC** members and their companies.



Whether you are in need of facility management expertise, maintenance services, or innovative solutions to enhance your operations, the **ifmaKC Service Directory** has got you covered.

Stay tuned for more updates and get ready to explore this invaluable tool that fosters collaboration and growth within our community. We can't wait for you to discover the wealth of opportunities and support that await you in the new **ifmaKC Service Directory!** *(can you tell we're excited about it?!)*

To learn more, scan the code or go to:
https://ifmakc.org/Our_Service_Directory_



ifmaKC Monday Morning Memo & News

We do our best to keep our members in the loop with all of the exciting things happening in our Chapter! As such, we have a News Article Page on our website and send out a weekly newsletter called the Monday Morning Memo. You can expect to find cool things like, a welcome greeting to the New Members, Upcoming Events, new industry Jobs in the area, and a Community Corner for notes and invitations from our members. Be on the look out!!



To learn more, scan the code or go to:
https://ifmakc/News_Articles.org



WE ♥ OUR '25-26 SPONSORS!!



We **DO** love our Sponsors, and we absolutely could **NOT** do what we do without them.

Interested in becoming an ifmaKC Sponsor?

Email: Sponsorship@ifmaKC.org

To learn more, scan the code or go to:
<https://ifmakc.org/Sponsor>

SCAN
ME! >>>



Good Talk!

Hey, we get it! This is a lot of information, and it can all get overwhelming. Sometimes you may have a question or concern, or maybe you've got a really great idea, and you're just not sure who to reach out to.

Well no worries, we pride ourselves on being the nicest group around. Except for maybe those Toys for Tots folks. But we're definitely nicer than those Girl Scouts. **Anyhoo**, you are strongly encouraged to talk with any Board Member at an event, reach out to any of our Committee Chairs, or just email our bold and intrepid **Chapter Administrator, Natalie Woodward** ~ info@ifmaKC.org. And we'll do our best you get you squared away as quickly as we can!



ifmaKC President
Tony Dolezal



ifmaKC VP
Caleb Hunt



ifmaKC Secretary
Janelle Agnos



ifmaKC Treasurer
Debbie Fangman



ifmaKC Past President
Ken Scott



ifmaKC Admin
Natalie Woodward

Hi!